

This architectural floor plan depicts a dormitory room with a grid system (A-I horizontally, 1-2 vertically). The room features a large central area with four double beds (labeled 3.19, 3.20, 3.21, 3.22) and two additional double beds (labeled 3.24, 3.25) near the right wall. Each bed is accompanied by a table and a chair. The plan includes numerous dimensions for furniture, room sections, and structural elements. Technical specifications for materials like VSG-Glas and Linoleum are provided. The layout also shows a kitchenette area with a sink and stove, a bathroom area with a toilet and shower, and a storage area with lockers. The plan is oriented with a north arrow pointing towards the top-left.

**Room Details and Dimensions:**

- Bed 3.19:** Beh. 2-Bett, A= 33.55 m<sup>2</sup> | W= GF/ Anstrich, U= 24.67 m | D= GK, LRH= 2.75 m FB= Linoleum
- Bed 3.20:** 2-Bett, A= 26.48 m<sup>2</sup> | W= GF/ Anstrich, U= 22.26 m | D= GK, LRH= 2.75 m FB= Linoleum
- Bed 3.21:** 2-Bett, A= 26.48 m<sup>2</sup> | W= GF/ Anstrich, U= 22.26 m | D= GK, LRH= 2.75 m FB= Linoleum
- Bed 3.22:** 2-Bett, A= 26.48 m<sup>2</sup> | W= GF/ Anstrich, U= 22.26 m | D= GK, LRH= 2.75 m
- Bed 3.24:** 2-Bett, A= 26.48 m<sup>2</sup> | W= GF/ Anstrich, U= 22.26 m | D= GK, LRH= 2.75 m FB= Linoleum
- Bed 3.25:** Beh. 2-Bett, A= 32.08 m<sup>2</sup> | W= GF/ Anstrich, U= 23.79 m | D= GK, LRH= 2.75 m FB= Linoleum

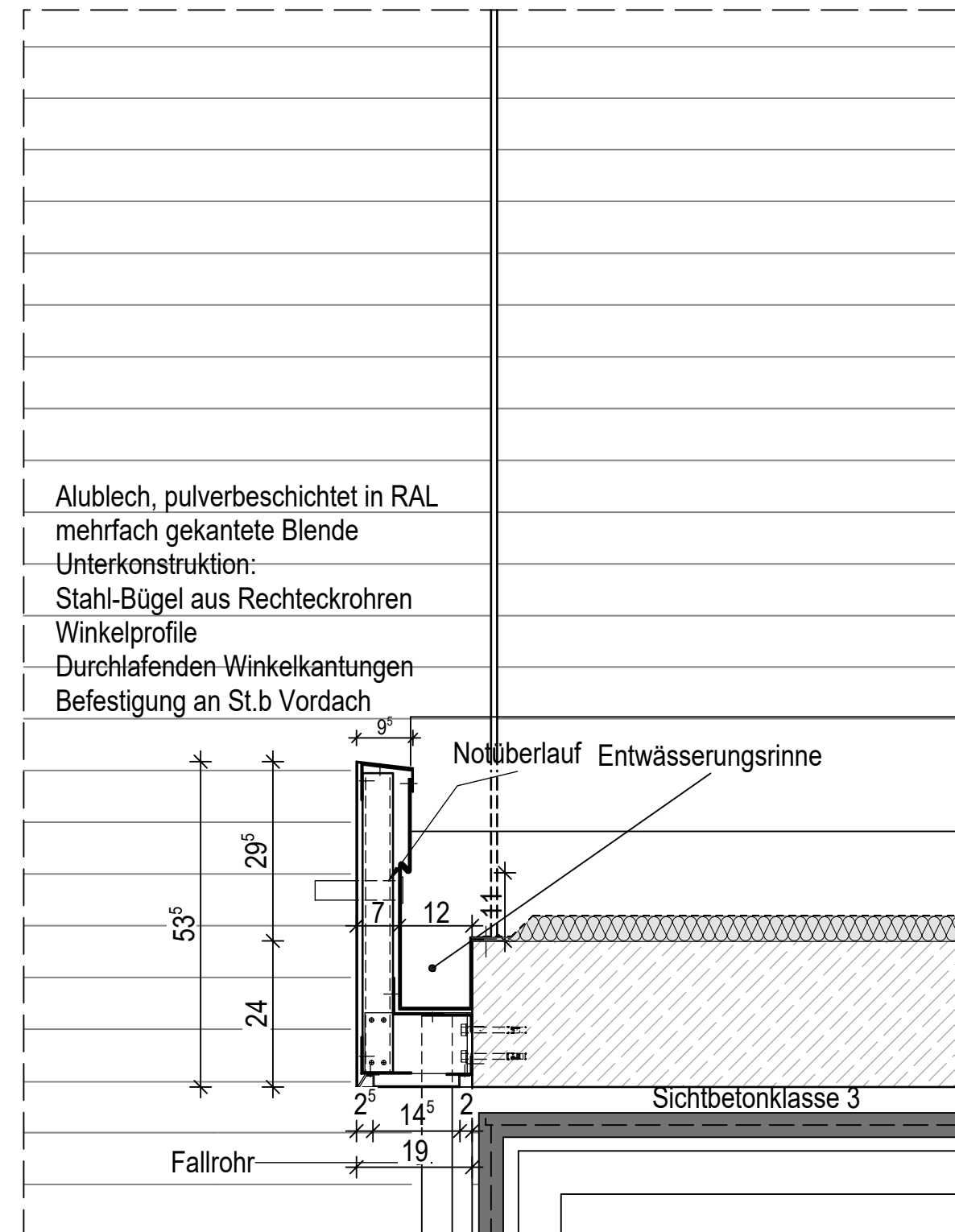
**Structural and Material Specifications:**

- Lichtauschnitt (VSG-Glas):** Multiple locations throughout the room.
- Material:** VSG-Glas, Linoleum, GK (Gips-Karton), GF (Gipsfaser-Platte).
- Dimensions:** Various measurements for furniture, room sections, and structural elements are provided throughout the plan.

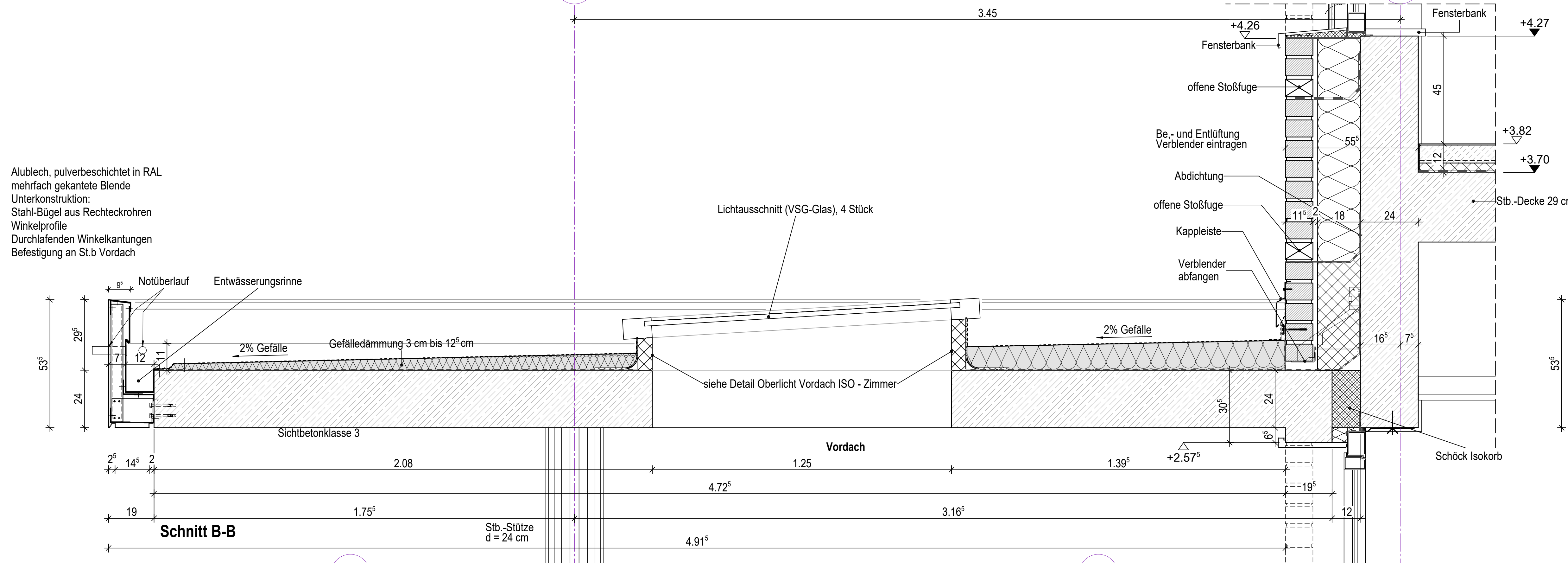
**Room Layout and Features:**

- Entrance:** Located at the bottom-left corner, marked with a triangle and the label "Vordach".
- Windows:** Located along the top and right walls, with dimensions and labels like "b/h=40/24", "b/h=24/2,5", and "b/h=50/24".
- Storage:** Lockers are located along the right wall, with dimensions like "b/h=24/2,5" and "b/h=24/2,5".
- Other Features:** The plan includes a kitchenette area with a sink and stove, a bathroom area with a toilet and shower, and a storage area with lockers.

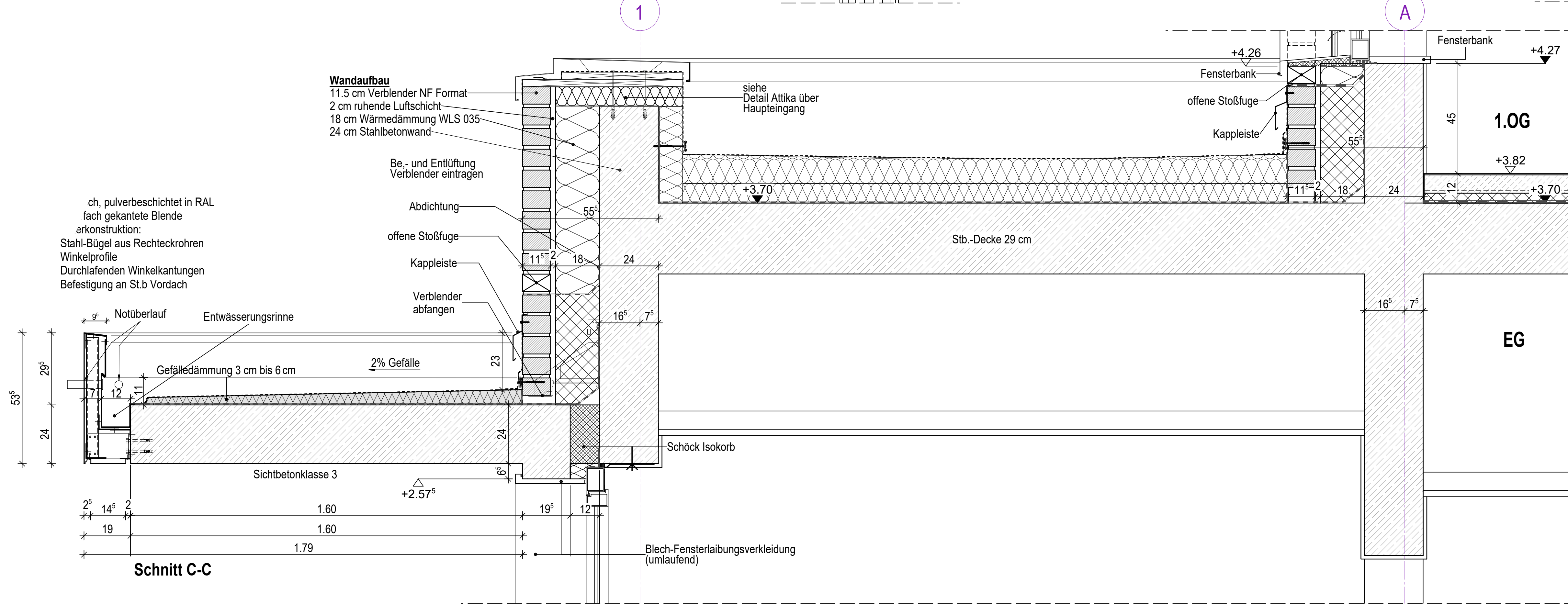
Vordach abgeschrägter Bereich beim ISO-Zimmer



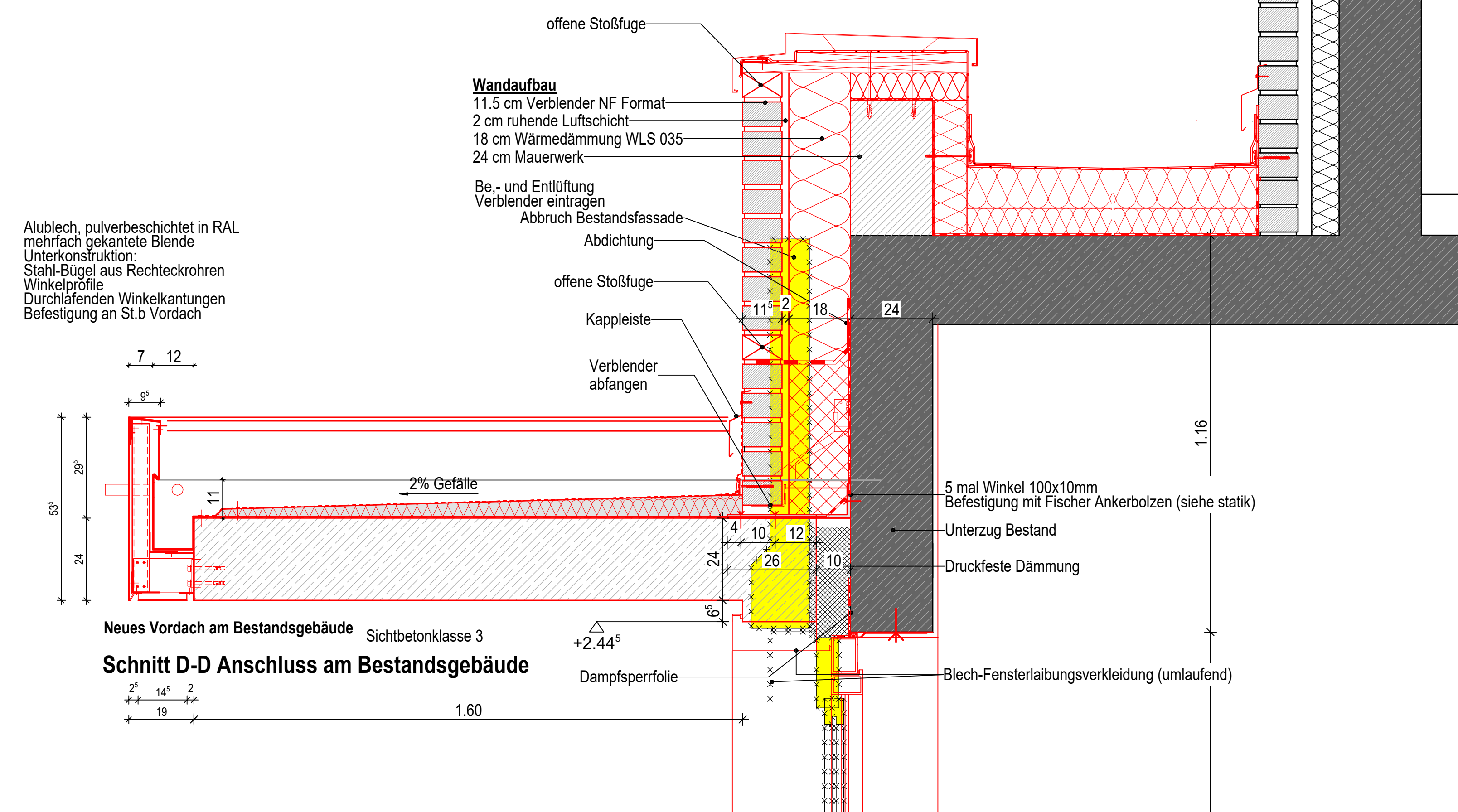
### Schnitt A-A



### Schnitt B-B



### Schnitt C-C



### Schnitt D-D Anschluss am Bestandsgebäude

Architectural floor plan of a building facade with various annotations and dimensions. The plan shows a series of windows and doors along a horizontal axis. Key features include:

- Dimensions:** Vertical dimensions of 2.75 and 2.63 are indicated on the left. Horizontal dimensions of 1.68 and 1.63 are shown above the first two window units. A height of 2.82 is noted on the right side.
- Annotations:**
  - "Fensterbank durchgehend" (continuous windowsill) at the top left.
  - "Vordach" (overhang) in the center.
  - "Notüberlauf" (overflow) near the top right.
  - "bestandsanordnungen müssen vor Ort ausgemessen werden. Im EG sollen die vorhandenen Brüstungen abgebrochen werden." (existing arrangements must be measured on site. In the EG, the existing balustrades should be dismantled.) with arrows pointing to window units on the right.
- Window and Door Labels:**
  - Windows are labeled "1x Sonnenschutz" (1x sun protection) and "DT: FEM 14", "DT: FEM 15", "DT: FEM 16", "DT: FEM 17".
  - Doors are labeled "Tür" and "Schiebetüren" (sliding doors).
- Access and Barriers:**
  - "barrierefreier Zugang" (barrier-free access) is noted below several door units.
  - "Eingang" (entrance) is labeled at the bottom center.
- Other Details:**
  - "Lüftung 1" (ventilation 1) is noted on the far left.
  - "K8= 0 250 MKB= +63.94 üNN Notentwässerung Hauptdach" (K8= 0 250 MKB= +63.94 üNN emergency drainage main roof) is noted on the left.
  - Various elevation markers are present: +70.58 üNN, +70.93 üNN OK Verbleibend, +70.58, +66.76 üNN, +65.99 üNN, and -0.41.